

Installation  
Note

# Keysight N1930B PLTS Software

# 1. Install PLTS software to your PC

Before installing PLTS, please check your Operating System and installed Service Packs.

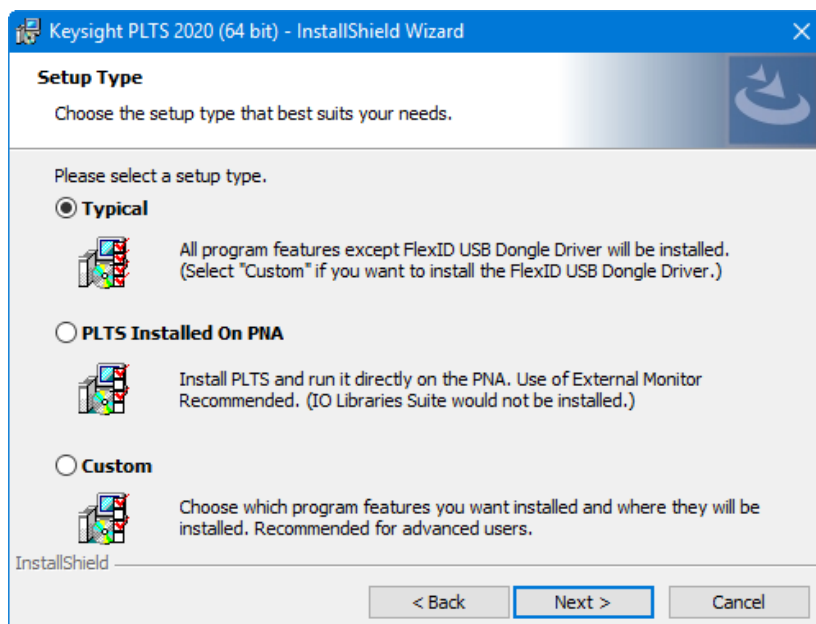
PLTS System Requirements:

| PC Requirement                    | Measurement Mode ONLY  | Off-Line Analysis Mode  |
|-----------------------------------|--|---|
|                                   |  | In the lab, controlling test equipment and making <b>quick analysis</b> of the results.   |
| <b>CPU</b>                        | 1.5 GHz Quad-core  | 1.5 GHz Quad-core   |
| <b>Main Memory</b>                | 4 GB   | 4 GB+   |
| <b>Virtual Memory<sup>a</sup></b> | 6 GB+  | 6 GB+   |
| <b>GPIB Interface</b>             | Keysight 82357A USB/GPIB Interface for Windows or supported GPIB card (any National Instruments or Keysight 82340/41 or 82350 GPIB card) | No GPIB connection is required to utilize PLTS in the off-line mode. Saved (stored) measurement files can be recalled at any time for analysis. |
| <b>Operating Systems</b>          | Windows 7 (64 bit with service pack 1), Windows 10 (64 bit)  | Windows 7 (64 bit with service pack 1), Windows 10 (64 bit)   |
| <b>Screen Resolution</b>          | 1280 x 1024 or greater required  |   |
| <b>Display Colors</b>             | High Color (16 Bit) or greater   |   |

a. As a general rule for optimum PC performance when using PLTS, virtual memory should be 1.5 to 2 times the size of the main memory.

If your PC meets these requirements, you can proceed with the PLTS installation:

1. Use a zip tool to unzip the PLTS install zip file (Keysight\_PLTS20xx\_64bit.zip) to a directory (recommend c:\PLTS), run the setup.exe to install PLTS software.
2. Follow the InstallShield Wizard prompts to Install the PLTS and other software products.



- **Typical:** Select for all program features to be installed.
- **PLTS Installed on PNA:** Select to run the program directly on a PNA. Use of an external

monitor is highly recommended. IO Libraries Suite would not be installed.

- **Custom:** Select to choose the program features you want installed. Click on an icon to the left of the feature name to change how the feature is installed.

## 2.Licensing and start the PLTS software

### Important PLTS License Notes:

From July 1,2020, PLTS2020 update1 release (PLTS2020U1), we implemented Keysight Advanced License (KAL), for PLTS orders after July 1,2020, PLTS uses KAL license.

For the existing PLTS users before July 1,2020, you can continue to use the legacy FLEXnet license or contact Keysight to upgrade to KAL license, and we changed the name of “ PLTS License management” and “PLTS license reset” to “ PLTS Legacy License management” and “PLTS Legacy license reset”

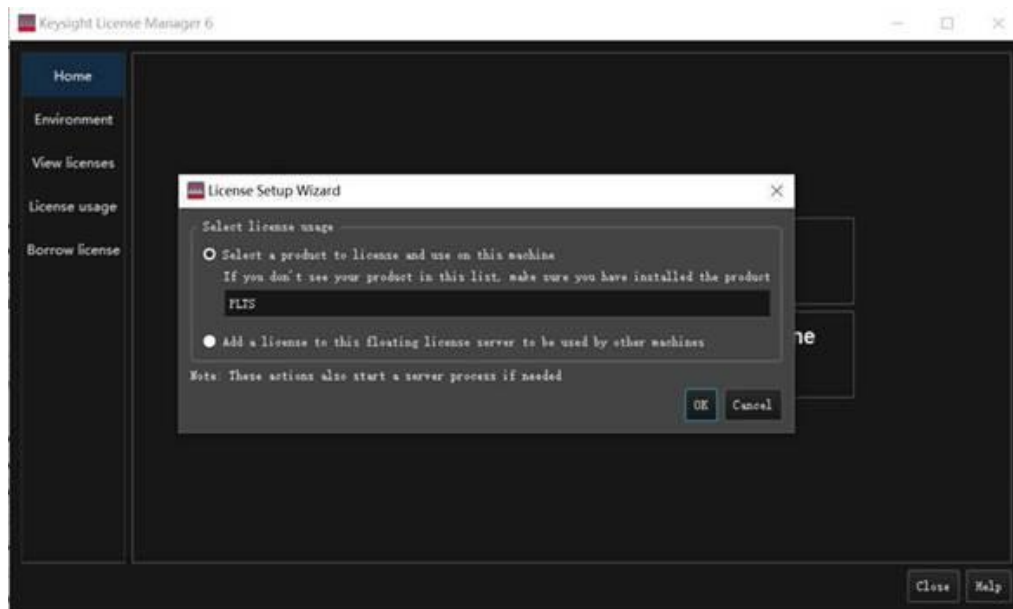
For the KAL license, users need to use Keysight License Manager 6 to add and manage the licenses.

PLTS software will automatically install “Keysight License Manger 6”, “PLTS legacy license management” and “PLTS legacy Reset” to you PC.

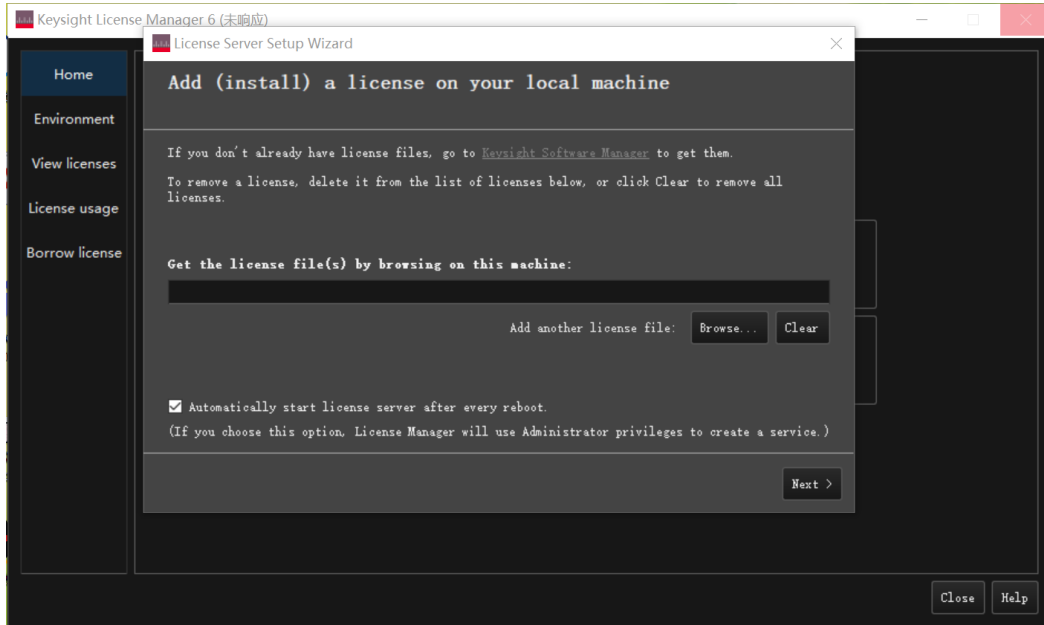
**Before the first start of the PLTS software, you can add KAL license in “Keysight License manager 6” or add legacy FLEXnet license in “PLTS legacy license management”.**

### 2.1 Procedure to add Keysight Advanced License (KAL)

- 1.Open” Keysight License Manager 6” in your Windows start menu to add your KAL licenses:



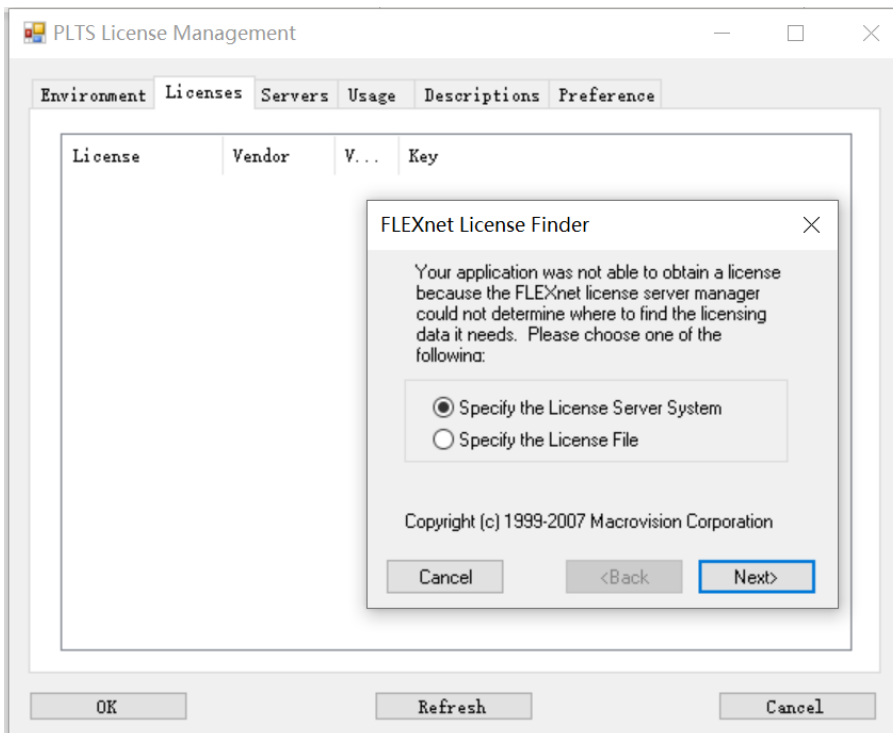
- 2.Make a selection based on license usage
- 3.Select **PLTS** then click **OK**.



4. Browsing to select your license file and click next. The license manager will verify and add your license.

## 2.2 Procedure to add Legacy FLEXnet License

1. Open "PLTS legacy License Management" in your Windows start menu to add your legacy FLEXnet licenses:



2. You will be asked to identify the license type of the software. Select your type of license file, then click **Next>**.

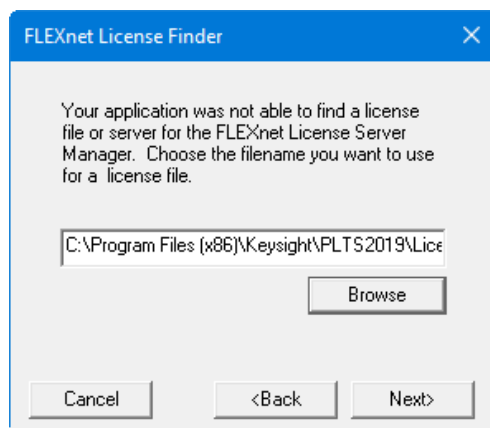
For a Networkable (Floating) License, select

For a Fixed (Node-Locked) License or Transportable (USB dongle) License, select

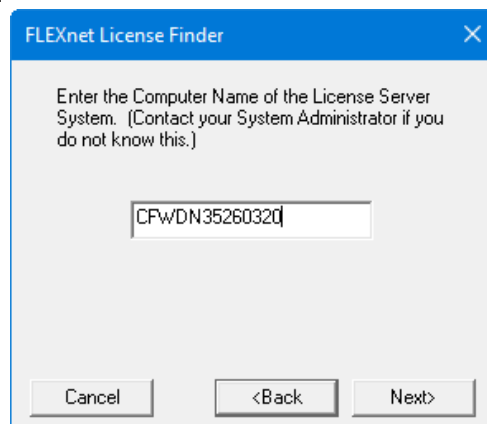


3. Then, one of the following dialog boxes are shown depending on your type of license:

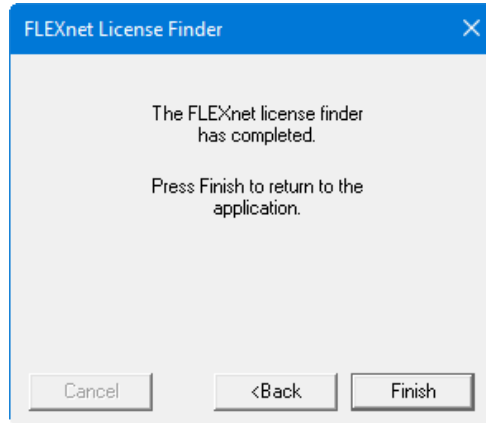
- **If you own a fixed (node-locked) license:** Click **Browse** and select the license file in the License directory. Then click **Next>**.



- **If you own a networkable (floating) license:** Enter the network computer server name that you recorded earlier.



- When the license is found and identified, click **Finish**.



### 2.3 If you didn't add the license before the first start of PLTS

When PLTS starts and can't find qualified license, PLTS will pop up a dialog, you can follow up the steps in the dialog to add the licenses:

